

DESCRIPTION

- Metal construction with a chrome plated, LifeShine® polished brass or glacier finish
- Includes adjustable showerhead, arm and flange
- 1/2" CC connections
- Check stops

OPERATION

- Lever style handle
- Pull-on/push-off design
- Allows control of both temperature selection and volume with a single handle

FLOW

- Showerhead is limited to 2.5 gpm (9.5 L/min)

CARTRIDGE

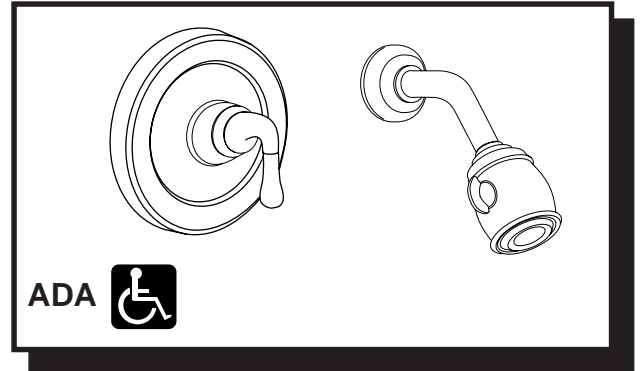
- 1225 cartridge design
- Nonmetallic/nonferrous and stainless steel materials
- Accommodates back to back installations

STANDARDS

- Third party certified by CSA to meet CSA B-125, ASME A112.18.1M and all applicable requirements referenced therein and complies with the applicable requirements of ANSI A117.1

WARRANTY

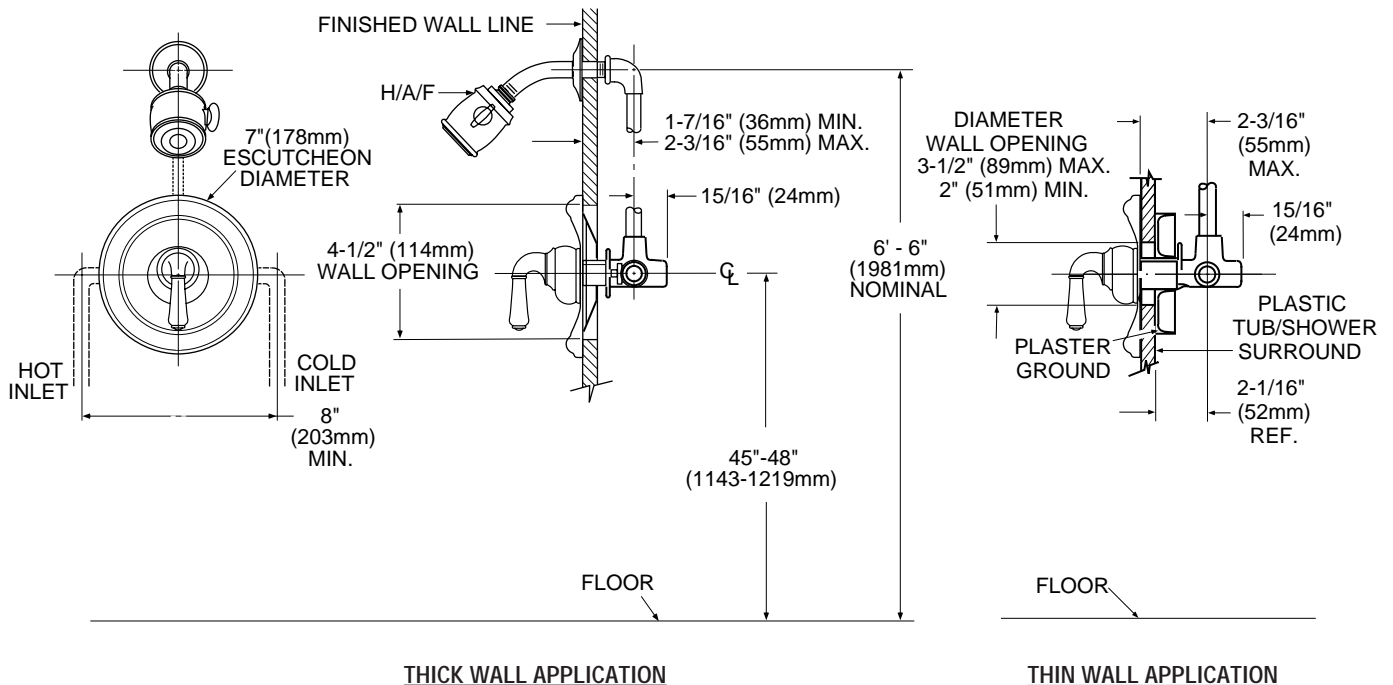
- Lifetime limited warranty against leaks, drips and finish defects to the original consumer purchaser
- 5 year warranty if used in commercial installations



MONTICELLO® Single-Handle Shower Valve

Models: 2575, 2575CP,
2575P, 2575W

NOTE: See reverse side for
illustrated parts and handle options



CRITICAL DIMENSIONS

(DO NOT SCALE)



ADA symbol applies to shower valve control only.